



EMERGENCY SERVICE.



SAME-DAY RESPONSE.



MINIMAL DOWN TIME.



WATER EXTRACTION.



RedHammer
Building Services

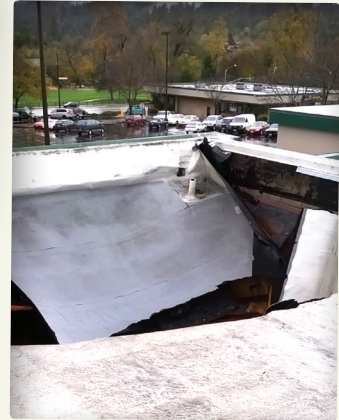
REDHAMMERBUILDING.COM

CASE STUDY: Felton, CA

Partnership Reigns in Collapse

PROBLEM: Sustained downpours pounded the CVS Pharmacy in Felton this past winter, overwhelming the structure, and collapsing a portion of the store. An early-morning call went out and RedHammer moved in.

As with all emergencies, everything is a high priority. "We hit the ground with safety as our first concern. Protect people and the store." says Curt Slater, CEO of RedHammer Building Services. While his crew was securing the building, Slater and the structural engineer thoroughly examined the damage and designed a response.



SOLUTION: "Since no two disasters are alike, we lean on our construction background and years of experience to formulate a plan." Slater, continues. "Each solution must match the unique conditions and damage." In this case, the erection of a temporary roof safely isolated repairs and protected the store.

RESULT: Within a day, the pharmacy was open again, quite a difference from when RedHammer arrived to 3 to 5 inches of water inside the store and fire trucks rumbling in the parking lot. **Spirit of cooperation:** Slater had high praise for the CVS staff and the water removal company assisting in the clean-up. "It's a good feeling. Everyone pulling together to get our client back on their feet." Since the rain never let up, RedHammer arranged to have the eighty sandbags used to channel water from the site, donated to the local fire department. "The gesture is consistent with the CVS brand and the role in the communities they serve," said Slater. "I talked to the guys at the fire station the next day. All the bags were already put to use!"

RedHammer has completed over 115,000 repairs for clients including CVS Pharmacies, Smart & Final, Hertz, Dollar General, Kohl's, and Simon Properties.